

**South Cambridgeshire  
Proposed Submission  
Policies Map: July 2013**

**Inset No. 81 Newton  
Map 1 of 1  
Scale 1:5000**

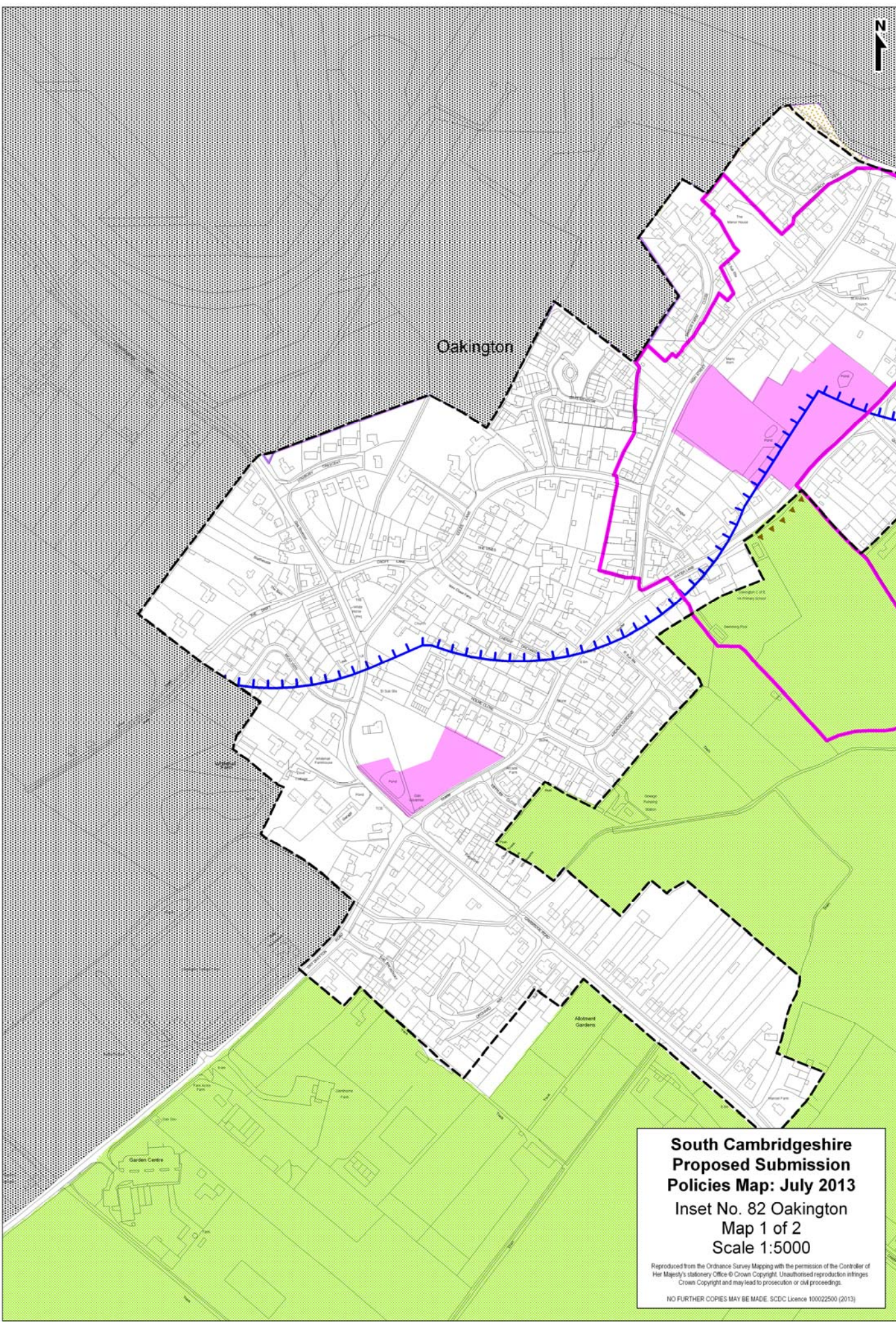
Reproduced from the Ordnance Survey Mapping with the permission of the Controller of Her Majesty's Stationery Office © Crown Copyright. Unauthorised reproduction infringes Crown Copyright and may lead to prosecution or civil proceedings.

NO FURTHER COPIES MAY BE MADE. SCDC Licence 100022500 (2013)





Oakington

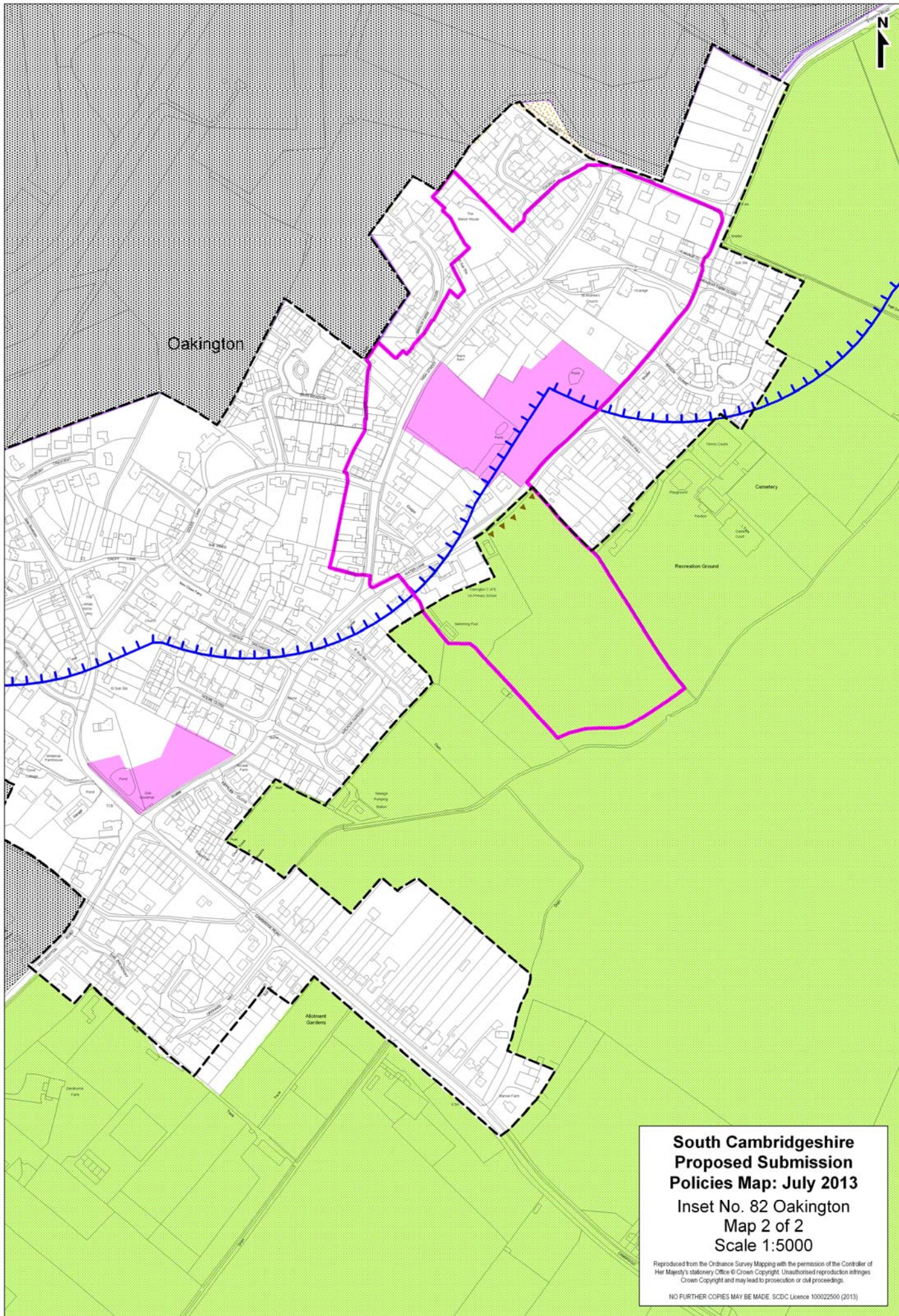


**South Cambridgeshire  
Proposed Submission  
Policies Map: July 2013**  
Inset No. 82 Oakington  
Map 1 of 2  
Scale 1:5000

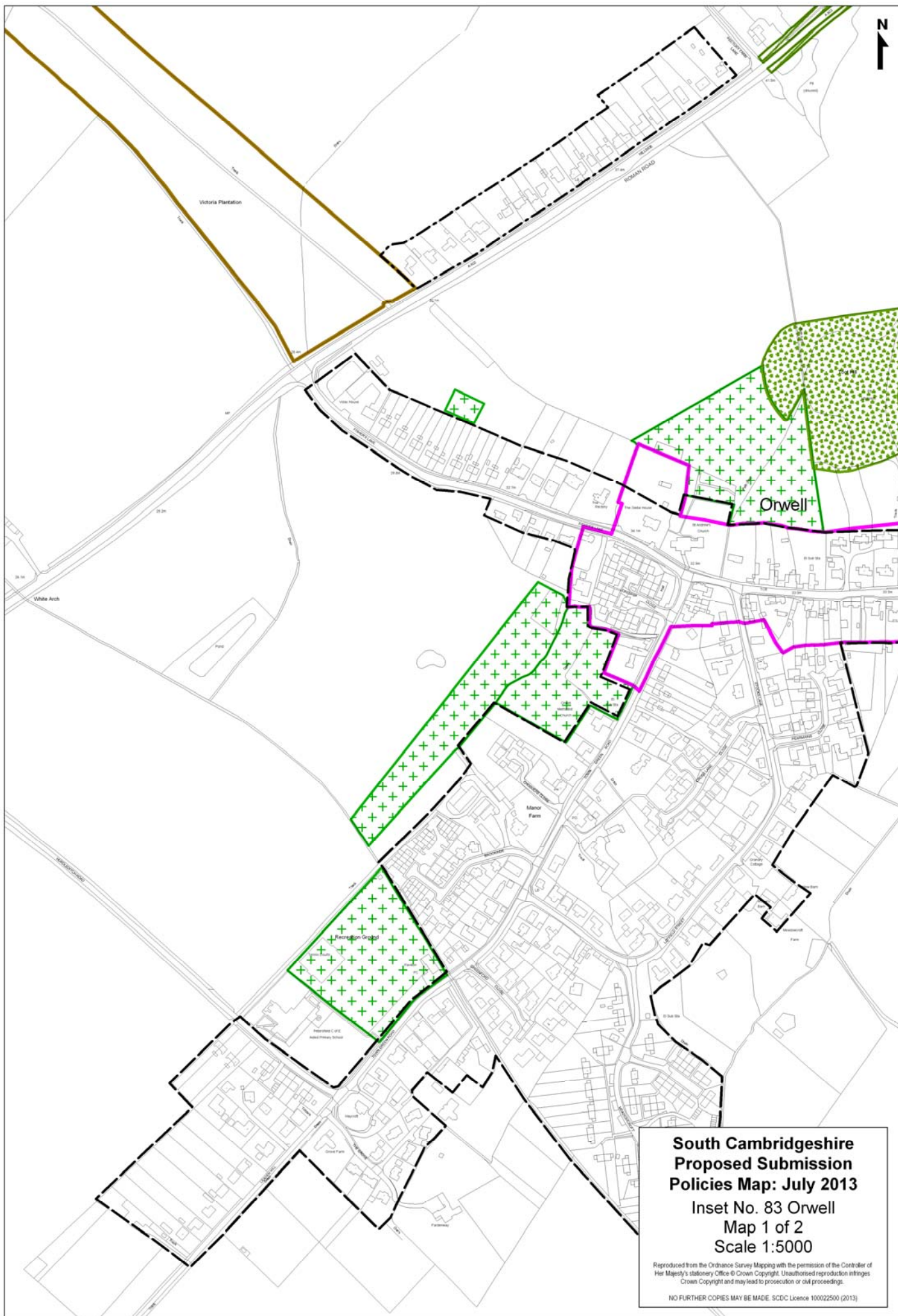
Reproduced from the Ordnance Survey Mapping with the permission of the Controller of Her Majesty's Stationery Office © Crown Copyright. Unauthorised reproduction infringes Crown Copyright and may lead to prosecution or civil proceedings.

NO FURTHER COPIES MAY BE MADE. SCDC Licence 100022500 (2013)







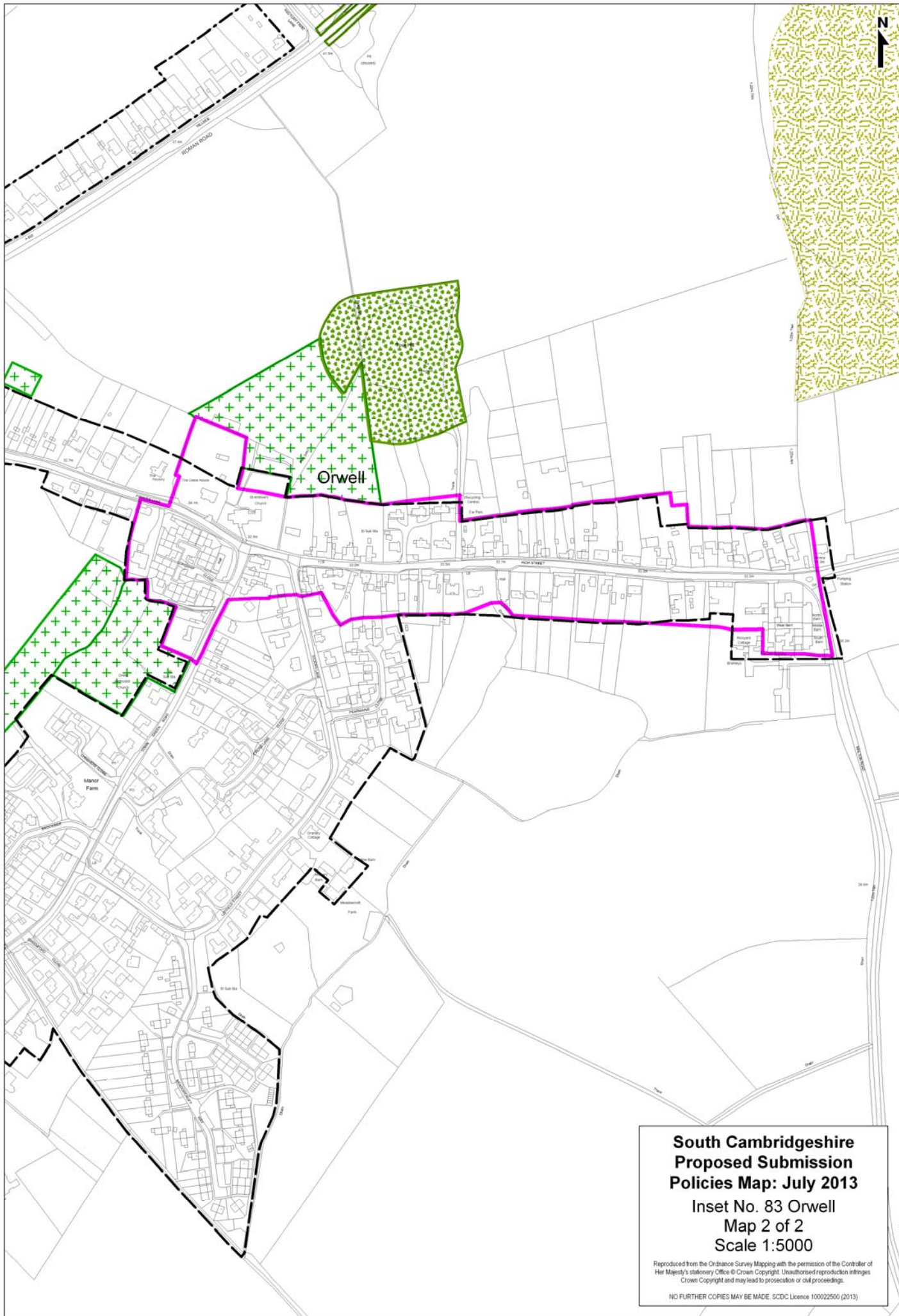


**South Cambridgeshire  
Proposed Submission  
Policies Map: July 2013**

**Inset No. 83 Orwell  
Map 1 of 2  
Scale 1:5000**

Reproduced from the Ordnance Survey Mapping with the permission of the Controller of Her Majesty's Stationery Office © Crown Copyright. Unauthorised reproduction infringes Crown Copyright and may lead to prosecution or civil proceedings.

NO FURTHER COPIES MAY BE MADE. SCDC Licence 100022500 (2013)

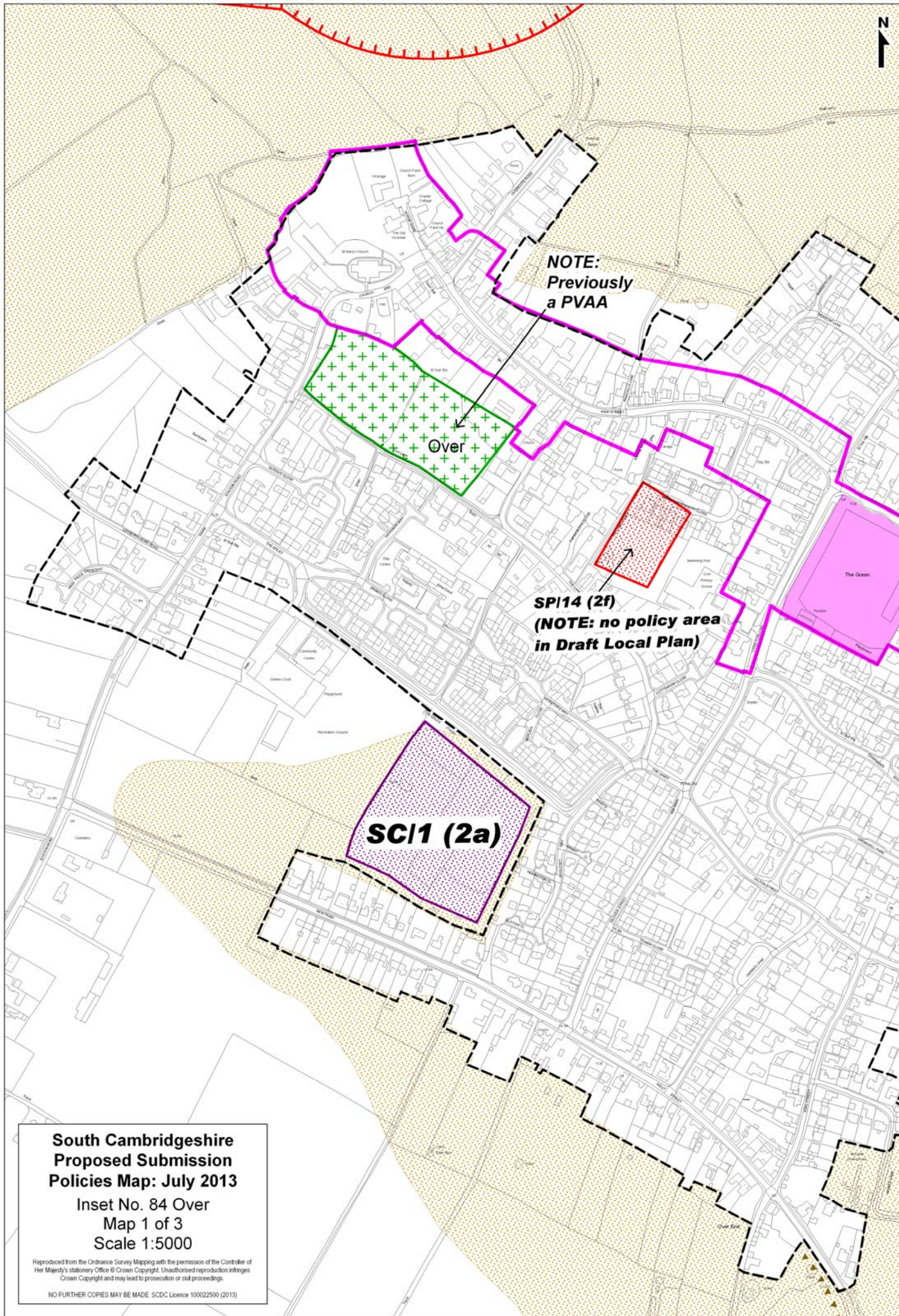


**South Cambridgeshire  
Proposed Submission  
Policies Map: July 2013**  
Inset No. 83 Orwell  
Map 2 of 2  
Scale 1:5000

Reproduced from the Ordnance Survey Mapping with the permission of the Controller of Her Majesty's Stationery Office © Crown Copyright. Unauthorised reproduction infringes Crown Copyright and may lead to prosecution or civil proceedings.

NO FURTHER COPIES MAY BE MADE. SCDC Licence 100022500 (2013)





**NOTE:**  
Previously  
a PVAA

Over

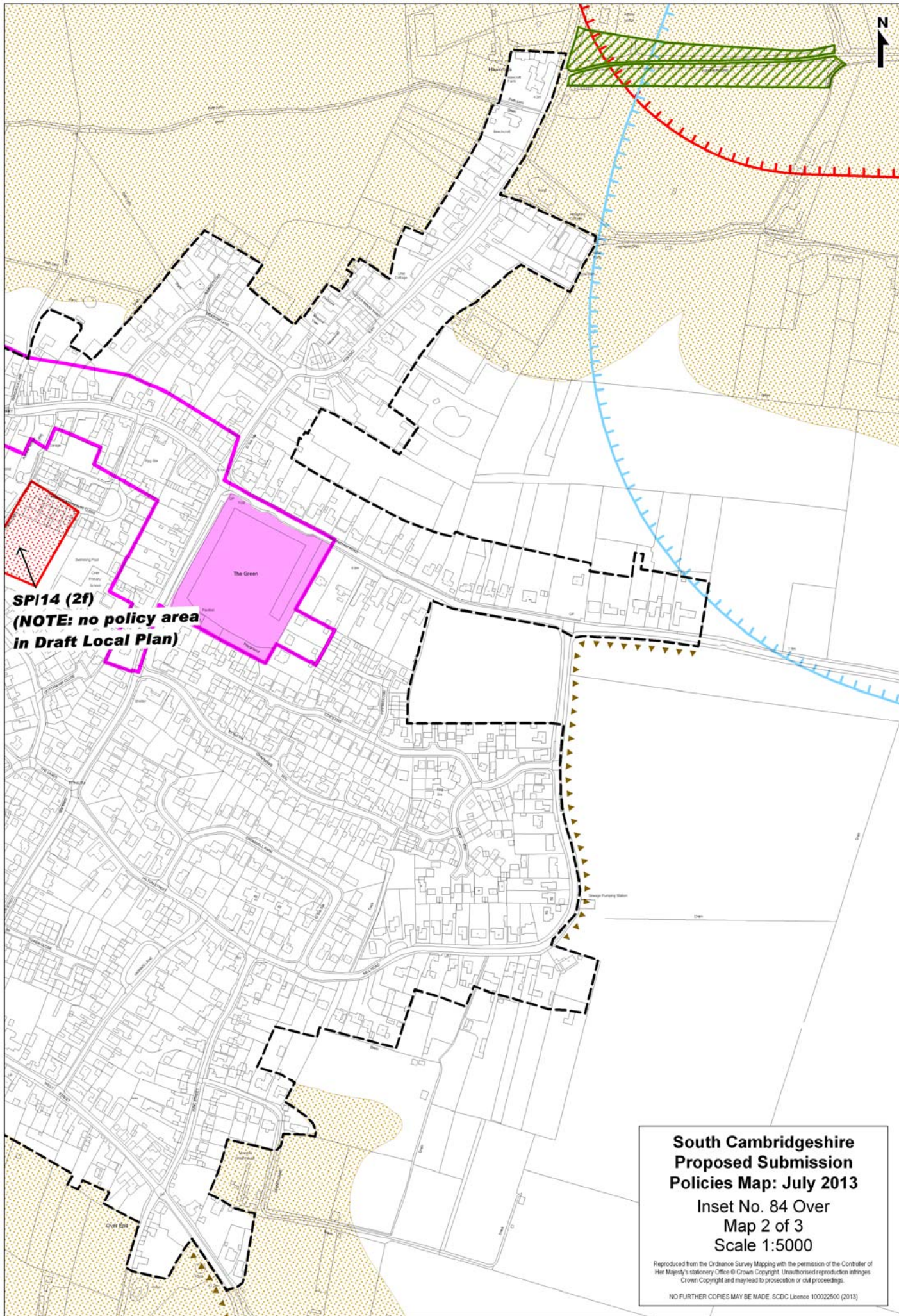
**SP14 (2f)**  
**(NOTE: no policy area  
in Draft Local Plan)**

**SC1 (2a)**

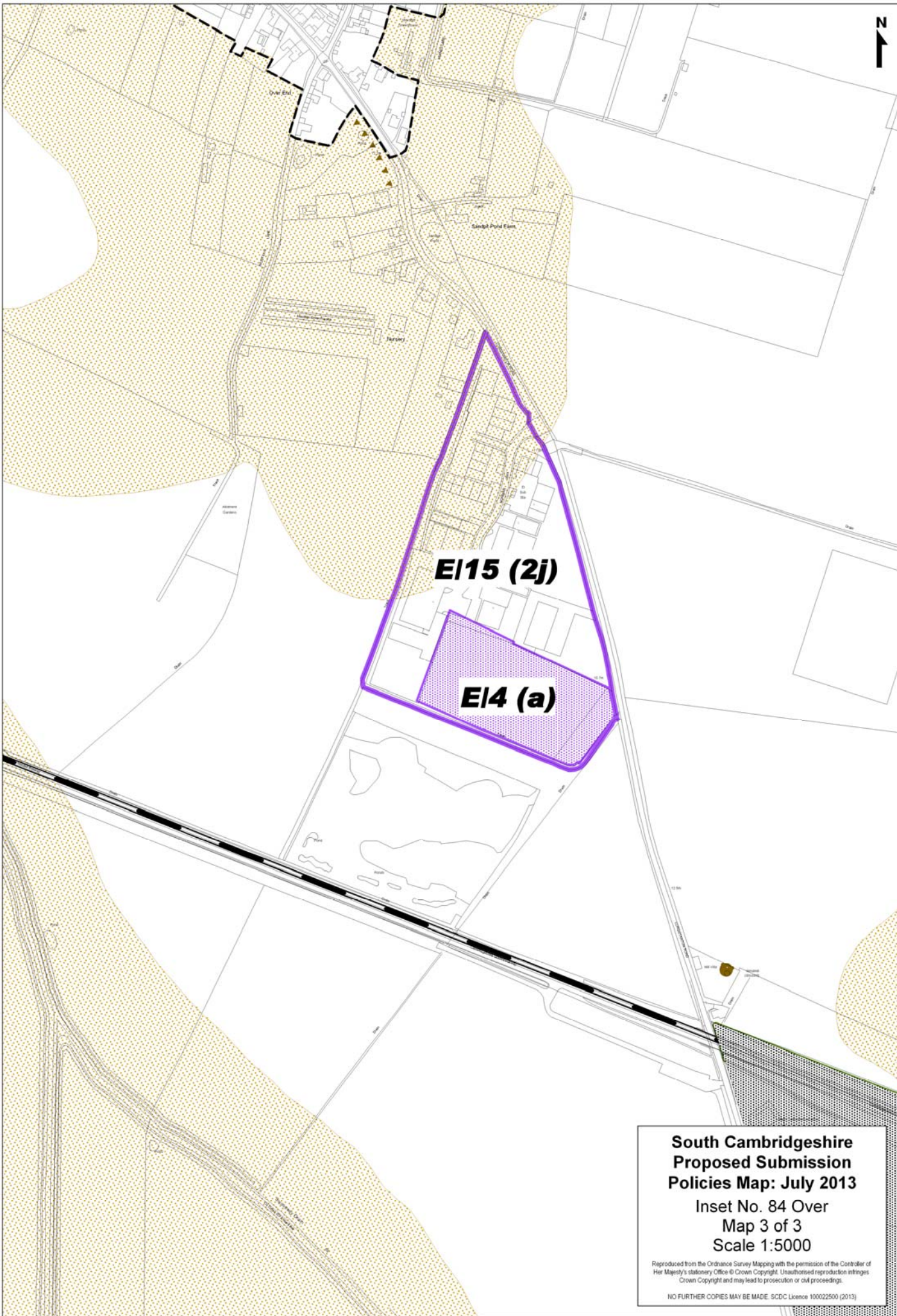
**South Cambridgeshire  
Proposed Submission  
Policies Map: July 2013**  
Inset No. 84 Over  
Map 1 of 3  
Scale 1:5000

Reproduced from the Ordnance Survey Mapping with the permission of the Controller of Her Majesty's Stationery Office © Crown Copyright. Unauthorised reproduction infringes Crown Copyright and may lead to prosecution or civil proceedings.  
NO FURTHER COPIES MAY BE MADE. SDCDC Licence 100022500 (2013)









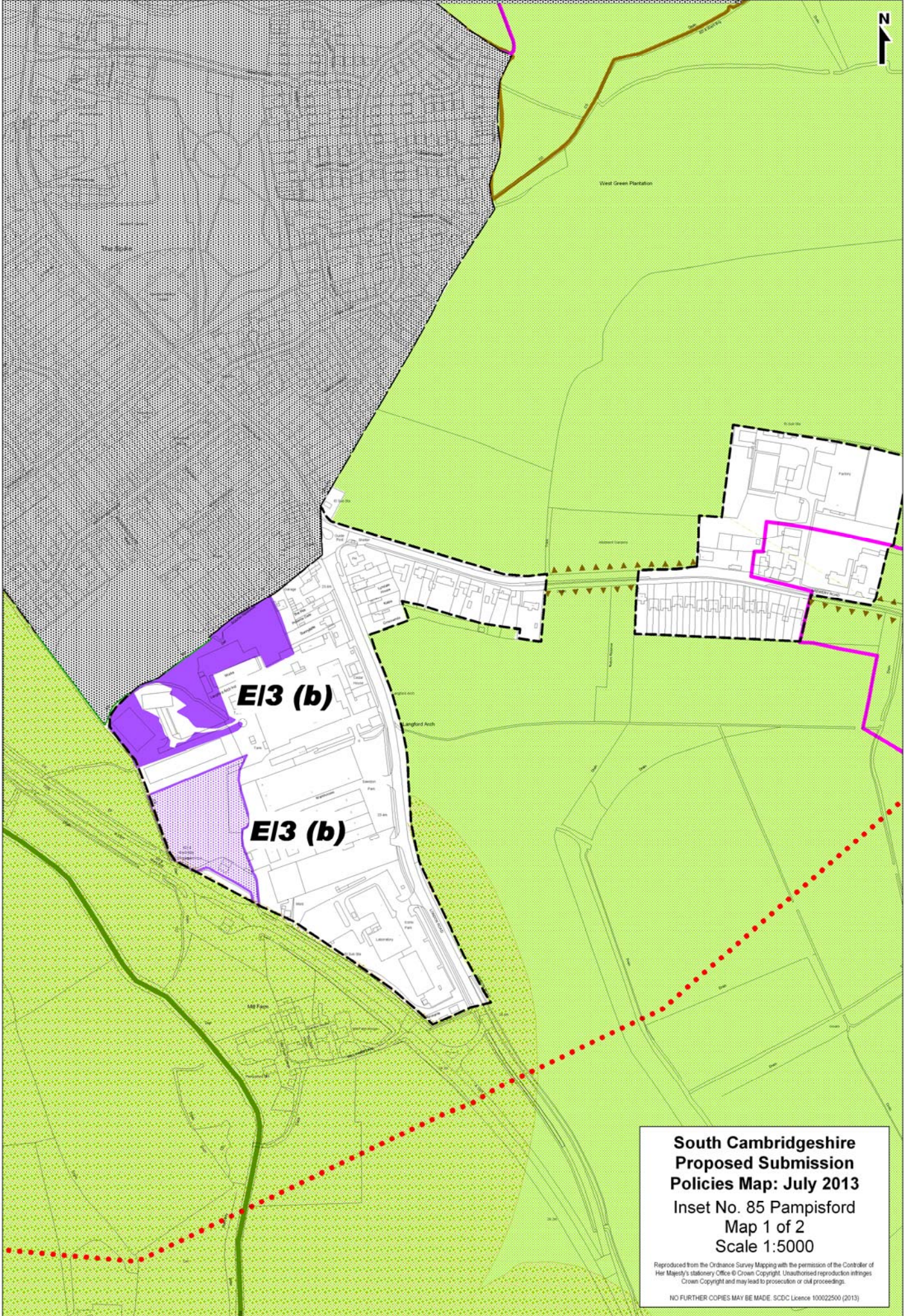
**South Cambridgeshire  
Proposed Submission  
Policies Map: July 2013**

Inset No. 84 Over  
Map 3 of 3  
Scale 1:5000

Reproduced from the Ordnance Survey Mapping with the permission of the Controller of Her Majesty's Stationery Office © Crown Copyright. Unauthorised reproduction infringes Crown Copyright and may lead to prosecution or civil proceedings.

NO FURTHER COPIES MAY BE MADE. SCDC Licence 100022500 (2013)





**E13 (b)**

**E13 (b)**

**South Cambridgeshire  
Proposed Submission  
Policies Map: July 2013**  
Inset No. 85 Pampisford  
Map 1 of 2  
Scale 1:5000

Reproduced from the Ordnance Survey Mapping with the permission of the Controller of Her Majesty's Stationery Office © Crown Copyright. Unauthorised reproduction infringes Crown Copyright and may lead to prosecution or civil proceedings.

NO FURTHER COPIES MAY BE MADE. SCDC Licence 100022500 (2013)



